

Expect Excellence



THE CADILLAC XTS  
EAGLE ECHELON®



CADILLAC  
PROFESSIONAL VEHICLES  
BY EAGLE COACH COMPANY





## THE CADILLAC XTS EAGLE ECHELON®

The Cadillac XTS Echelon represents the next evolution in innovative design and styling and is the flagship of Eagle Coach Company's product offerings.

It is based on the all-new Cadillac XTS heavy-duty coachbuilder's chassis, featuring a 3.6L SIDI DOHC V6 VVT engine, StabiliTrak, 1 year of OnStar "Directions and Connections" plan, and the CUE Information and Media Control System.

The exterior styling is current and contemporary, with distinctive body lines, a full-painted roof and body, large side windows and a glass skylight that allows natural light to illuminate the casket compartment.

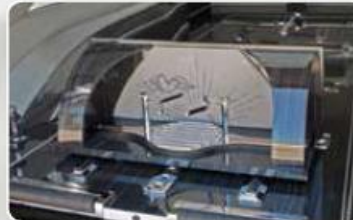
The Cadillac XTS Echelon is also packed with many interior features sure to satisfy the most discriminating funeral homes.



The European styling of Eagle's exclusive Echelon is truly a masterpiece. The Echelon features a true limousine-style rear window, painted top, and glass skylight to naturally illuminate the casket and floral display. (Shown with optional electric Extension Table)



A contemporary painted roof with ornate modern landau bars further enhance the Echelon's sophisticated exterior.



The exclusive integrated Urn Enclave is standard on the Echelon. With either the manual or electric extension table, the portable is substituted.



The Echelon comes with a skylight to illuminate the casket compartment.



A wide-opening casket door is a standard feature on the Echelon; a custom embroidery panel is also standard.

### ECHELON PRODUCT SPECS:

- Full-painted roof and body
- Limousine-styled windows and full skylight
- 10 rear floor rollers
- Exclusive Extend-A-Sill with 90-degree sill plate rollers
- Quick-release rear bier pin, with dual front bier pin plates
- Formica casket floor
- Leatherette casket compartment interior and trim
- Full 3-piece sliding glass partition with Eagle logo
- Closed or open wall church truck compartment
- 85-degree opening 2nd rear door
- Under-floor spare tire storage compartment
- Stainless-steel umbrella storage with 3 umbrellas
- Formal swag-style drape (load door only)
- Chrome landau bows
- LED Coach Lights on side doors
- Protective flush-mount insert on rear bumper
- Integrated Urn Enclave
- 18" polished aluminum wheels and full-size spare tire
- One-piece composite casket loading door, back side doors with structural reinforcements
- One-piece composite roof and quarter panels with structural reinforcements
- 6-year/60,000-mile conversion warranty

### DIMENSIONS:

Casket door opening height	38.0" / 99.06 cm
Casket door opening width	43.0" / 109.22 cm
Chassis extension - wheelbase	44.0" / 111.76 cm
Floor length	115.0" / 292.10 cm
Loading height	28.0" / 71.12 cm
Overall height	69.0" / 175.26 cm
Overall length	246.0" / 624.84 cm
Overall width	73.0" / 185.42 cm
Rear side door width	50.0" / 127.00 cm
Wheel base	156.0" / 396.24 cm
Width between wheelhouse	41.5" / 105.41 cm

Please visit our website or contact your authorized Eagle dealer for a complete list of available features and options.

Specifications are subject to change at any time without notice.



THE EAGLE ECHELON