



LUXURY & PROFESSIONAL MOTORCARS INC
310.609.2900



ECoACH E450



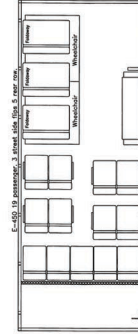
1029 E DOMINGUEZ ST | CARSON, CA 90746 | 310.609.2900
WWW.COACHWEST.COM | SALES@COACHWEST.COM

E450 28FT

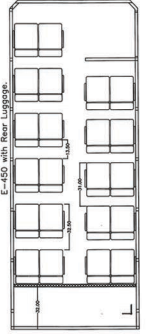


- 19-23 PASSENGER SEATING CAPACITY
- A/C 105,000 BTU
- BUILT ON THE FORD E450
- V8 GASOLINE ENGINE, AVAILABLE IN CNG
- 5 SPEED ELECTRONIC TRANSMISSION
- FULLY WELDED LIGHTWEIGHT FRAME
- RESIN-INFUSION COMPOSITE BODY
- FULLY COMPOSITE FLOOR

20 PASSENGER
w/WHEELCHAIR



23 PASSENGER
w/LUGGAGE

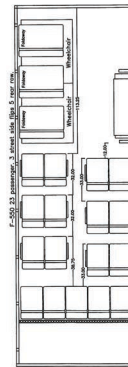


F550 34FT & 37 FT

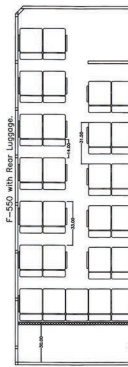


- 27-31 PASSENGER SEATING CAPACITY
- A/C 125,000 BTU
- BUILT ON THE FORD F550
- AVAILABLE IN V10 GASOLINE, POWER STROKE 6.7 DIESEL, OR CNG
- 6 SPEED ELECTRONIC TRANSMISSION
- FULLY WELDED LIGHTWEIGHT FRAME
- RESIN-INFUSION COMPOSITE BODY
- FULLY COMPOSITE FLOOR

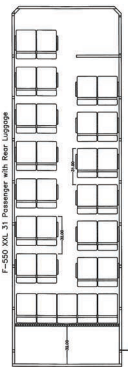
23 PASSENGER
w/WHEELCHAIR
& LUGGAGE



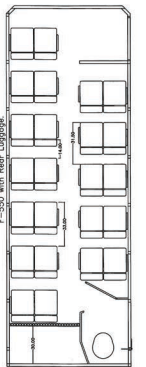
27 PASSENGER
w/LUGGAGE



31 PASSENGER
w/LUGGAGE



24 PASSENGER
w/BATHROOM
& LUGGAGE

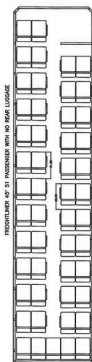


FREIGHTLINER 40FT & 45FT

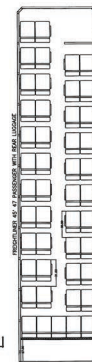


- 47-51 PASSENGER SEATING CAPACITY
- A/C 205,000 BTU
- BUILT ON THE FREIGHTLINER M2 CHASSIS
- AVAILABLE IN 6.7 DIESEL OR CNG
- 6 SPEED ALISON TRANSMISSION
- FULLY WELDED LIGHTWEIGHT FRAME
- RESIN-INFUSION COMPOSITE BODY
- FULLY COMPOSITE FLOOR

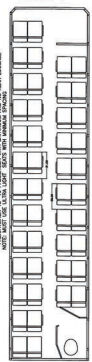
51 PASS



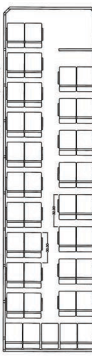
47 PASS
w/LUGGAGE



46 PASS
w/BATH-
ROOM



41 PASS



37 PASS
w/LUGGAGE



45 Ft FREIGHTLINER

40 Ft FREIGHTLINER